

CAN Newsletter Online

SPS IPC DRIVES 2015

CANopen servo drives and automation software

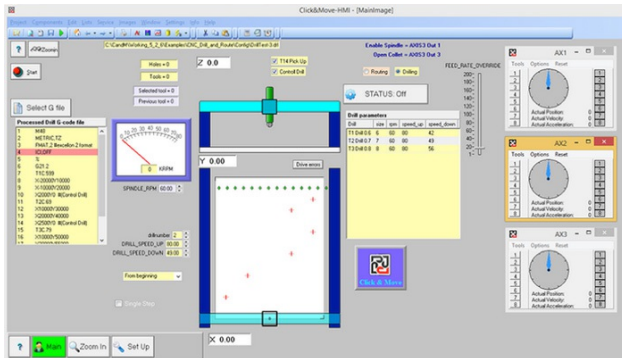
At the SPS, Advanced Motion Controls (USA) presents a range of its CAN-related products including CANopen servo drives and their Integrated Development Environment.

THE DZX SERIES CANOPEN SERVO DRIVES are designed to operate in harsh environments including hot, cold, shock, and vibration. These drives plug directly into the PCB (printed circuit board) to achieve the tightest integration when embedded into a machine. The ambient operating temperature range is from $-40\text{ }^{\circ}\text{C}$ to $+75\text{ }^{\circ}\text{C}$ with a shutdown heat sink temperature of $+85\text{ }^{\circ}\text{C}$. These drives come with a weight of 105 g but can output up to 40 A peak at 80 V_{DC} .



The DZX series with CANopen servo drives (Photo: Advanced Motion Controls)

Integrated Development Environment (IDE)



The Click&Move IDE (Photo: Advanced Motion Controls)

The Click&Move IDE provides the user with a programming environment for a range of applications: Motion, PLC machine control, G-code file handling for CNC apps, process control, and robotics. The IDE consists of applications to graphically create/edit Function Block Diagram based logic schematics and HMI screens, debug application code, organize and archive application code, merge and compare code as well as automating the build/compile steps. Finished applications support CANopen communication to AMC servo drives and other peripheral devices such as network I/O and can operate from platforms such as PC (Win OS and Linux), standalone controller (MACC), and AMC drives.

The company presents its product's at the SPS IPC Drives 2015, which takes place in Nuremberg, Germany from 24 to 26 November. You will find Advanced Motion Controls in hall 1, booth 636.