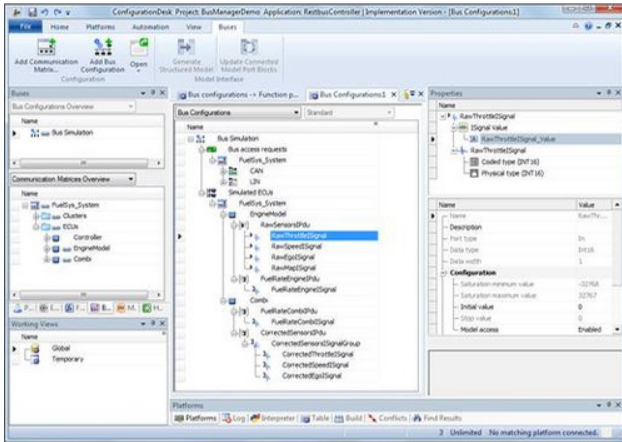


EMBEDDED WORLD 2016

## CAN and CAN FD bus simulation

The Dspace Bus Manager is the central tool for configuring bus communication for simulation purposes. It supports different bus systems, such as CAN, CAN FD, and LIN.



(Photo: Dspace)

THE BUS MANAGER IS AVAILABLE as an add-on for the company's Configuration Desk to configure hardware-in-the-loop real-time applications for Scalexio hardware. It provides one tool for homogeneously configuring several bus systems at the same time. The tool enables bus configuration via drag-and-drop and working with several communication matrices for one configuration.

The configuration tool sends and receives CAN and CAN FD frames/PDUs cyclically and supports multiplexed PDUs. The rest bus configuration is customizable with a tool automation interface.

Dspace (Germany) will be at the Embedded World 2016 from February 23 to 25 in Nuremberg, Germany. They can be visited in hall 4, booth 4-316.