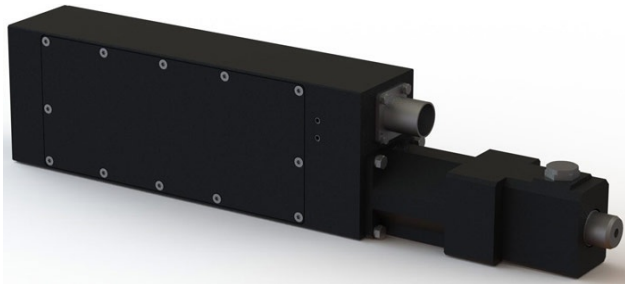


REVERSIBLE DC MOTOR

## Actuator with CANopen connectivity

ISP System announced CANopen actuators for armored vehicles. This includes electric and electromagnetic actuators.



*The CANopen communication allows an information exchange between the vehicle's embedded host controller and the actuator (Photo: ISP System)*

ISP System is specialized in design and manufacturing of high-precision mechanic and mechatronic equipment for 20 years especially in electric embedded actuators. The company recently became member of the CAN in Automation non-profit association.

ISP System announced a CANopen actuator (utterly designed and manufactured them) for armored vehicles. It is moved by a DC motor, which is driven by an embedded controller featuring CANopen connectivity. This interface allows an information exchange between the vehicle's embedded host controller and the actuator. The CAN connector is compliant with the MIL-STD-810-G standard for harsh environment and is made with reinforced components. The products resist to 40-g shocks, comes

with a working temperature of -32 °C to +80 °C, is sand and dirt tolerant, as well a salt spray resistant. It is also MIL-STD-461-F certified for the electromagnetic interference. It complies with the CiA 301 series. This actuator offers a range of applications due to its stroke of 300 mm, performed in less than two seconds with an 800-N force. Its parametric design allows an easy customization, said the supplier. The company already produced actuators using CANopen. Its deformable mirrors connect about 50 actuators.

[CW](#)