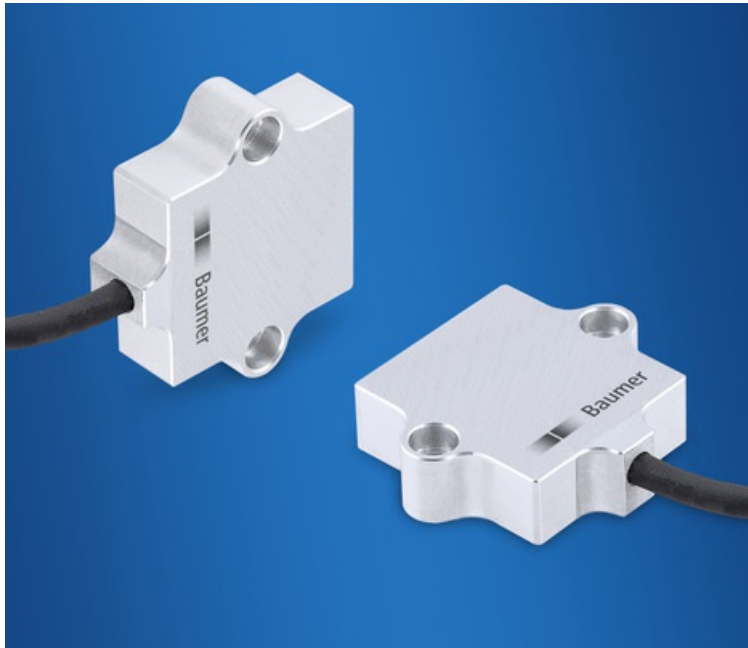


C5-M corrosion resistant and IP69K-rated

Baumer has introduced the GIM140R inclination sensor. It is designed for harsh outdoor applications.



The GIM140R measures 48 mm x 48 mm x 14 mm (Photo: Baumer)

[Zoom](#)

Quite many sensors meet their limits when it comes to measuring angles in harsh outdoor conditions. Inclination sensors in robust industrial design by sensor provider Baumer ensure measurements of tilt angles even in demanding environments. The GIM140R series integrate MEMS sensor elements, which are particularly qualified for the rough applications in industrial and mobile automation. The non-contact sensor operation without any without moving parts is completely wear-free for maximum reliability under harshest conditions. In the near future, these sensors will provide a CANopen interface compliant to CiA 410.

The GIM140R features an absolute measuring accuracy of up to $\pm 0,4^\circ$. The IP67/IP 69K protection, the C5-M corrosion resistance, and the temperature range from -40°C to $+85^\circ\text{C}$ make the sensors immune against temperature fluctuations and pollution of all kinds. The aluminum housing and the all-encapsulated electronics particularly qualify the inclinometer series for continuous outdoor operation at mobile installations.

[hz](#)