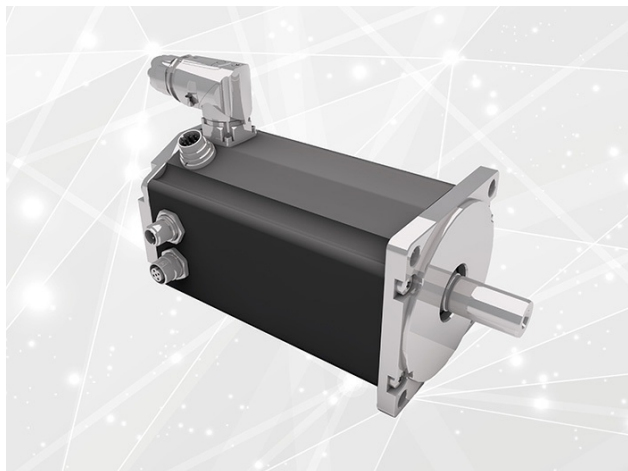


MOTOR

CANopen version available

Following Dunkermotoren's BG 66, BGE5510, and BG 95, the BG 75 is now also available as a dPro version. A CANopen version is available for connection and programming of the motors.



*Control through CANopen is possible depending on the version of the motor
(Source: Dunkermotoren)*

With a continuous output power of up to 590 W, peak power of up to 1700 W, and a peak torque of almost 5,8 Nm, the BG 75 dPro is more powerful than all other versions of the BG 75 series, explained the company. The product comes with a supply voltage of 24 V_{DC} or 48 V_{DC}. The product is suitable in application fields such as logistics, robotics, as well as machine and plant engineering. It can, for example, be used equally in the food, semiconductor, and electronics industries, or can operate as a drive for AGVs (Automated Guided Vehicles).

Connection and programming of the motors is done either via CANopen or one of the Ethernet interfaces. The hybrid connector used for this reduces the cabling effort. The motor can then be programmed, controlled, and monitored via the "Drive Assistant 5" commissioning and configuration tool and/or Motioncode. In addition, safety is a top priority at Dunkermotoren, said the company. That's why a certified STO function (Safe Torque Off) is possible for all BG 75 dPro versions. This allows the motor to be switched off torque-free without interrupting the logic voltage, which eliminates the need for time-consuming referencing when

restarting.

[CW](#)